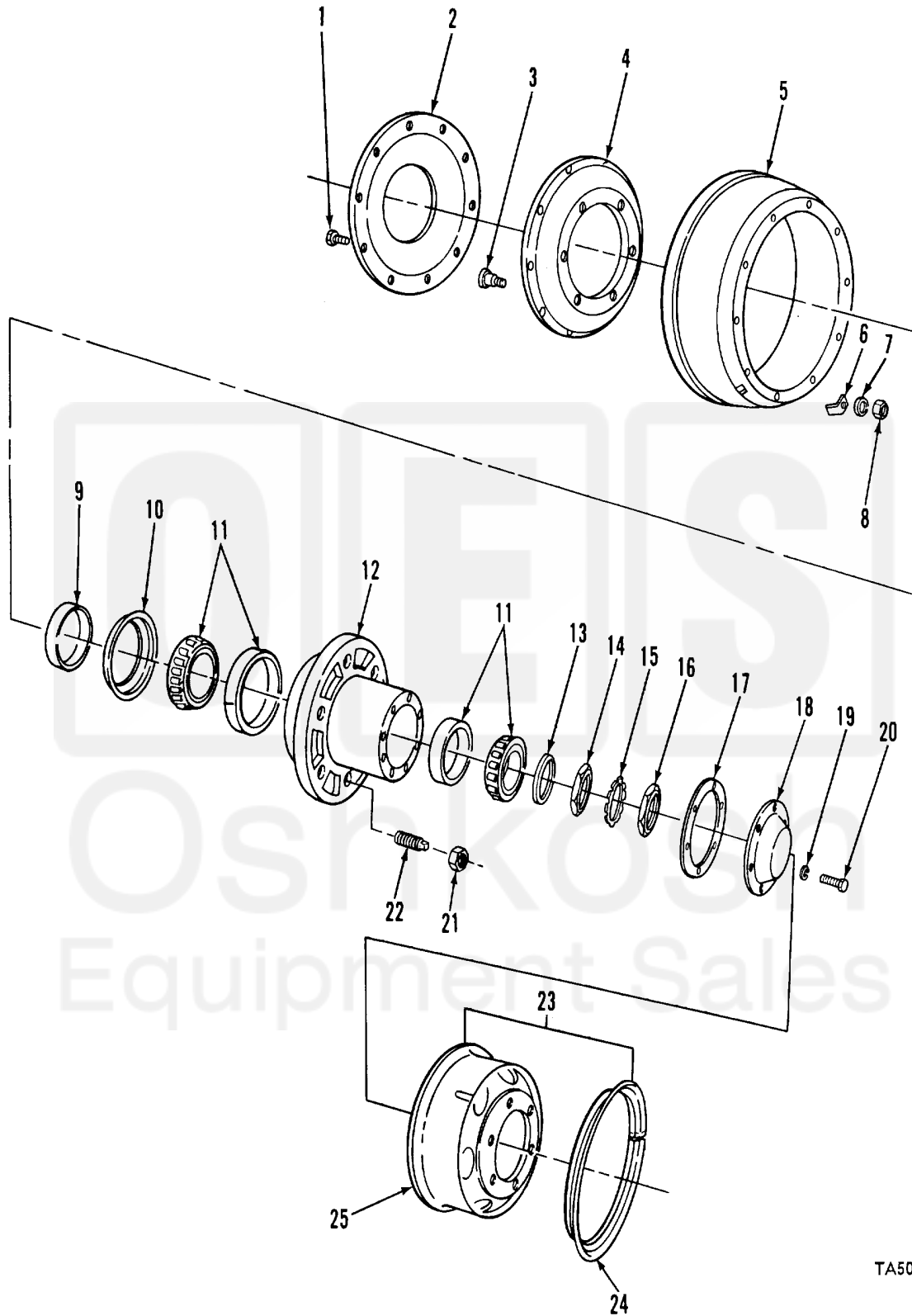


SECTION II

TM9-2330-203-14&P



TA506766

FIGURE 18. WHEEL AND HUB.

SECTION II				TM9-2330-203-14&P	
(1)	(2)	(3)	(4)	(5)	(6)
ITEM NO	SMR CODE	CAGEC	PART NUMBER	DESCRIPTION AND USABLE ON CODES (UOC)	QTY
16	PAOZZ	19207	7346885	UOC: 152,843 NUT, PLAIN, OCTAGON WHEEL BEARING ..... ADJUSTING (OUTER)	2
17	PAOZZ	19207	7521787	UOC:152,842,843 GASKET .....	2
17	PAOZZ	19207	8710726	UOC:842 GASKET .....	2
17	PAOZZ	19207	87107143	UOC:152 GASKET. ....	1
17	XBOZZ	19207	7346993	UOC:844 GASKET. ....	1
18	PAOZZ	19207	8710725	UOC:843 COVER, ACCESS .....	1
18	PAOZZ	19207	326286	UOC:152 CAP, GREASE.....	1
18	PAOZZ	19207	8170744	UOC:842 COVER, ACCESS .....	1
18	XBOZZ	19207	7979307	UOC:844 COVER, ACCESS .....	1
19	PAOZZ	96906	MS35338-45	UOC:843 WASHER, LOCK .....	6
19	PAOZZ	96906	MS35338-48	UOC:152,844 WASHER, LOCK .....	6
20	PAOZZ	96906	MS90725-29	UOC:842,843 BOLT, MACHINE .....	6
20	XBOZZ	96906	MS3529-113	UOC:152,844 SCREW, CAP, HEXAGON. ....	6
21	PAOZZ	96906	MS51983-4	UOC:842,843 NUT, PLAIN, SINGLE BA R.H. THD.....	6
21	PAOZZ	96906	MS51983-3	NUT, PLAIN, SINGLE BA LH THD .....	6
22	PAOZZ	96906	MS53068-2	NUT, CAP, DUAL WHEEL MOUNTING R.H., THD. ...	6
22	PAOZZ	96906	MS5306-1	NUT, CAP DUAL WHEEL MOUNTING, RH, THD. ....	6
23	PAOZZ	96906	MS53044-5	WHEEL, PNEUMATIC,TIR. ....	4
23	PAOZZ	96906	MS53044-6	UOC:842,844 RING, SIDE, AUTOMOTIV KNEUMATIC, TIR .....	4
24	PAOZZ	96906	MS53045-3	UOC:152,843 RING, SIDE, AUTOMOTIV. ....	4
25	PAOZZ	19207	7389493	DISK, WHEEL.....	1
25	PAOZZ	19207	7389620	UOC:152,843 WHEEL, KNEUMATIC, TIR .....	1
				UOC:42,844	

END OF FIGURE